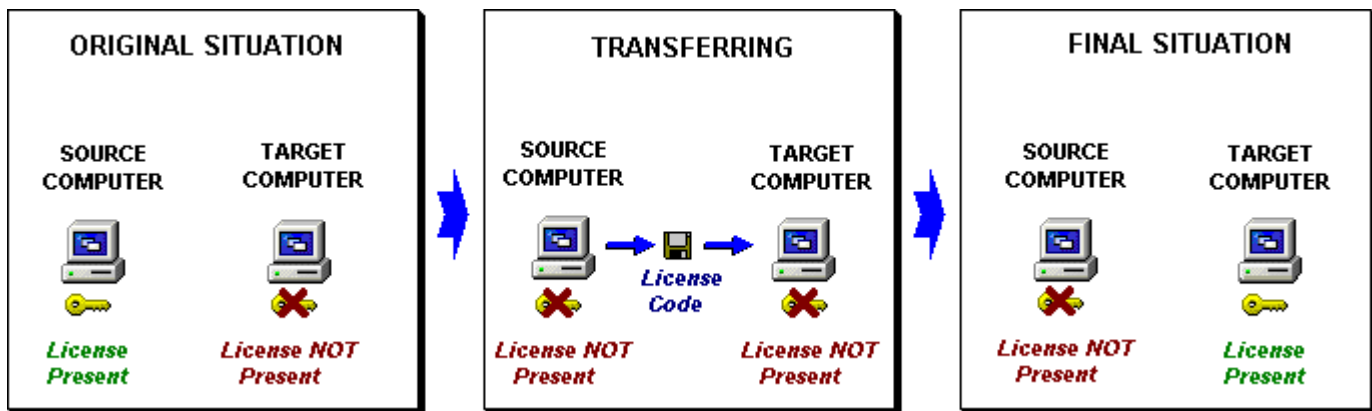


## Transferring SoftKey License for Advantech Studio

Procedures and general information about how to Transfer an existent SoftKey License for Advantech Studio.

### Introduction

This document describes the process “Step-By-Step” of how to “Transfer” an Advantech Studio SoftKey license from one computer to another. It is strongly recommended to read fully this document before execute the procedure.

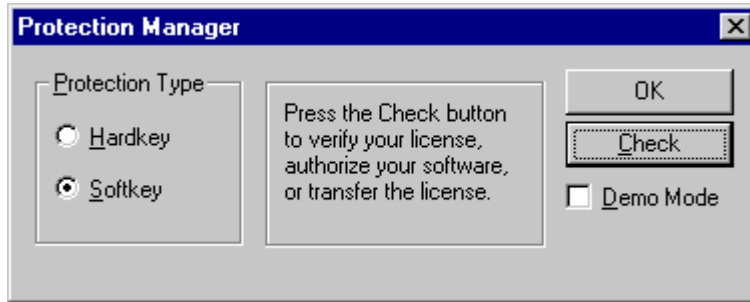


### Process to “Transfer” the SoftKey license from “Source Computer” to “Target Computer”:

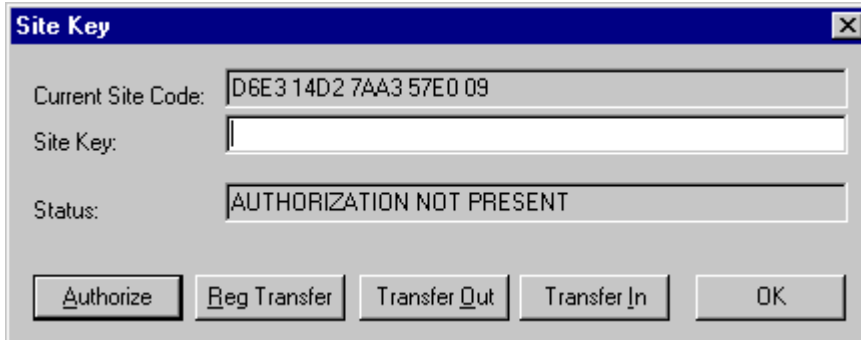
1. Install an Advantech Studio on a computer (Target Computer);
2. Insert an empty floppy disk into this computer driver (“A:\”, for example);
3. Run the “Register” module from “Advantech Studio Tools” program group;



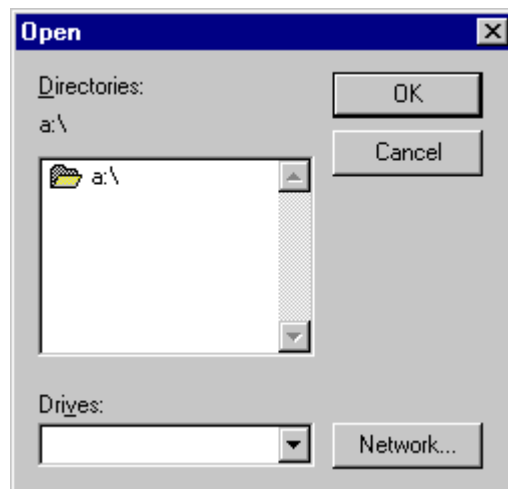
4. In the “Protection Manager” window, select the “Softkey” option;



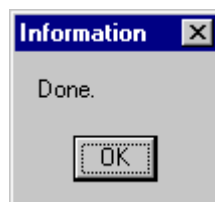
5. Press the “Check” button to open the “Site Key” window. Notice that the “Status” field must display the message “AUTHORIZATION NOT PRESENT”;



6. Press the button “Ref transfer” to open the “Open” window and select the floppy disk unit (“A:\”, for example) in the “Drivers” combo box. So, press the “OK” button;



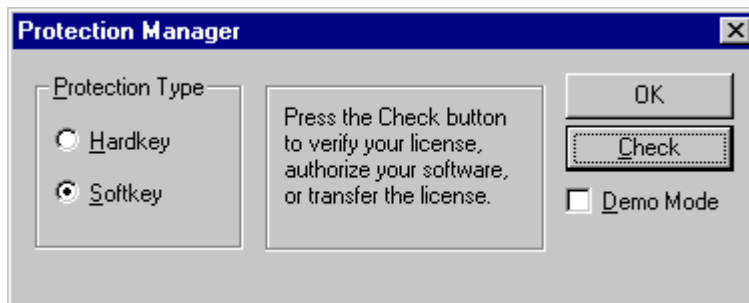
7. After some seconds, it must appear an “Information” window, with the message “Done” – it means that a code was correctly copied to the floppy disk. Press the “OK” button from the “Information” window;



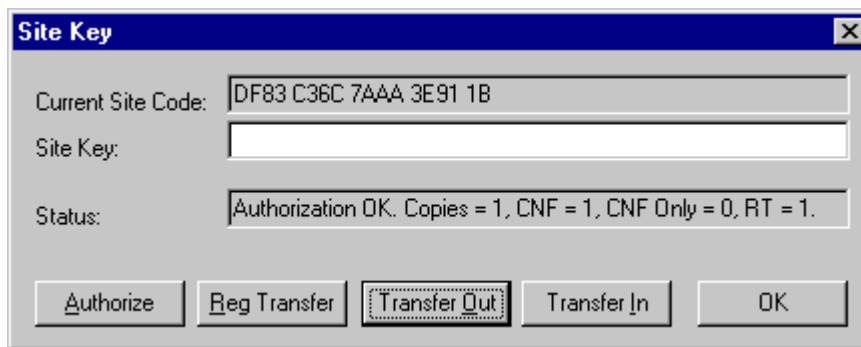
8. Take off the floppy disk from this computer (Target Computer) and insert it into the floppy driver ("A:\", for example) from the computer where there is already a registered SoftKey (Source Computer);
8. Run the "Register" module from "Advantech Studio Tools" program group, in the Source Computer;



9. In the "Protection Manager" window, verify that the "SoftKey" option must be previously selected;



10. Press the "Check" button to open the "Site Key" window. Notice that the "Status" field must display the message "Authorization OK" plus the rights of your license copy.



11. Press the button "Transfer Out" to open the "Open" window and select the floppy disk unit ("A:\", for example) in the "Drives" combo box. So, press the "OK" button.



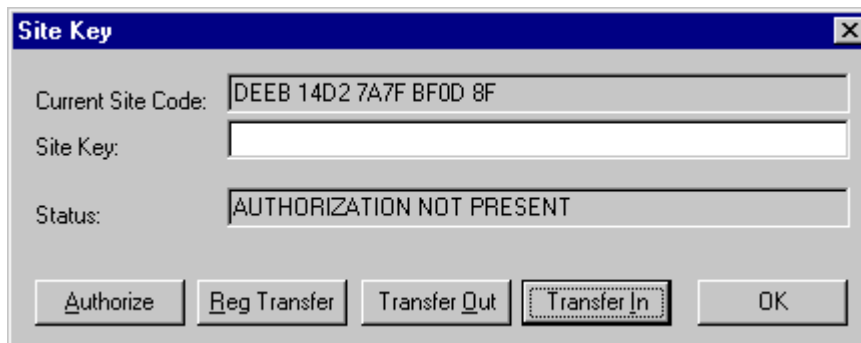
**WARNING:** This command will disable the SoftKey from your computer (Source Computer) and will record a code into the floppy disk. If this license will not be registered in the other computer (Target Computer) by the procedure below, this license will be LOST;

12. After some seconds, it must appear an “Information” window, with the message “Done” – it means that a SoftKey code was correctly copied to the floppy disk. Press the “OK” button from the “Information” window;

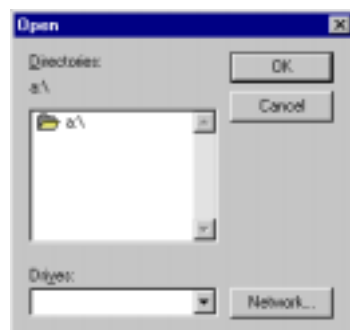


13. Take off the floppy disk from this computer (Source Computer) and insert it again into the floppy driver (“A:\”, for example) from the other computer (Target Computer);

14. In this computer (Target Computer), run the “Register” module and enter in the “Site Code” window again.



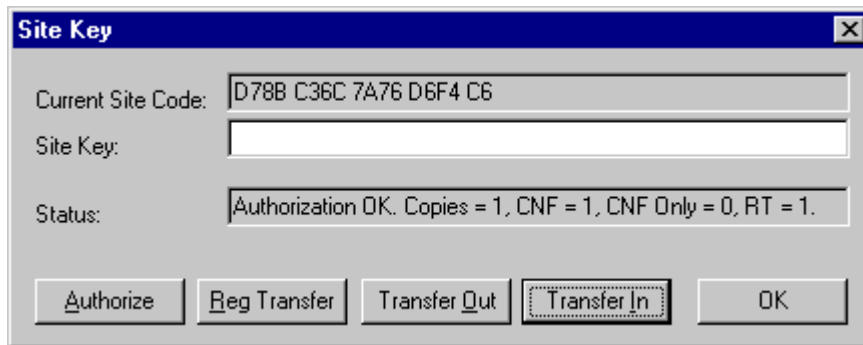
15. Press the button “Transfer In” to open the “Open” window and select the floppy disk unit (“A:\”, for example) in the “Drives” combo box. So, press the “OK” button;



16. After some seconds, it must appear an “Information” window, with the message “Done” – it means that a SoftKey code was correctly transferred from the floppy disk into the computer (Target Computer). Press the “OK” button from the “Information” window;



17. Notice that the “Status” field must display the message “Authorization OK” plus the rights of your license copy.



18. Press the “OK” button to finalize the process. The SoftKey from the “Source Computer” was transferred to the “Target Computer”. However, it is necessary to make clear that the license has been MOVED and not COPIED from one computer to the other.