

Licensing your AStudio Software

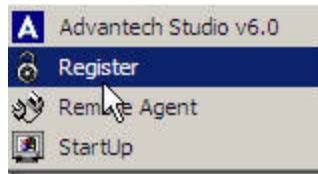
With the introduction of AStudio Version 6.0, softkeys are the standard licensing method. Hardware license keys, which were used to license AStudio 5.1 are now only available by special request.

These instructions are valid for new license installations only. For complete instructions to upgrade an existing AStudio license to a different version, please refer to the User Guide.

Please follow the instructions below to license your AStudio software using a Softkey. Detailed instructions are located in the AStudio User Guide.

To license your software with a Softkey:

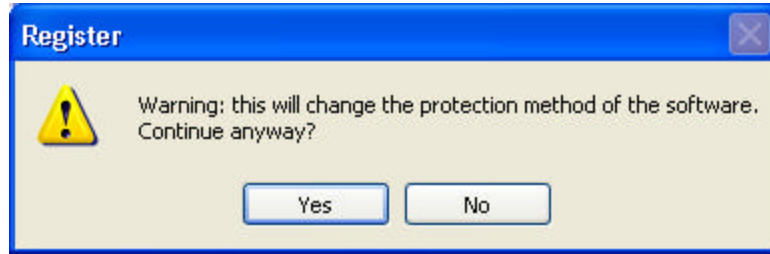
1. Before starting AStudio, click **Start/Programs/AdvantechStudio/Register** (see image below).



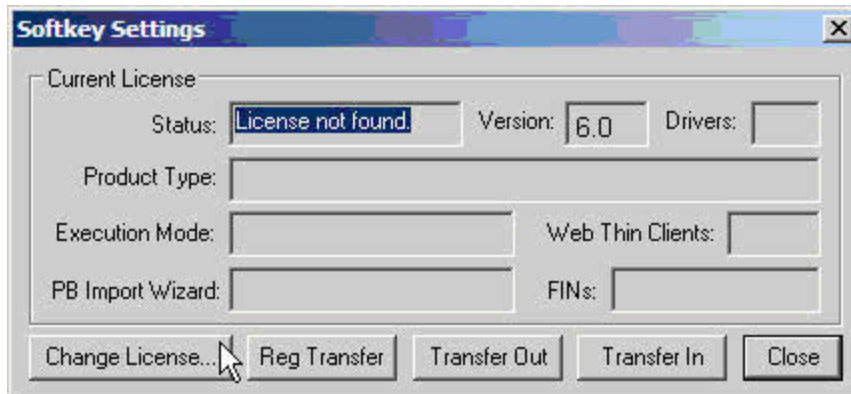
2. Click the **Softkey** radio button then click the **Check...** button on the **Protection Manager** dialog box (see image below).



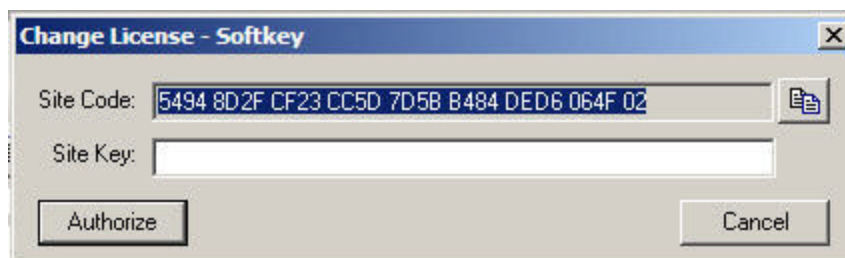
NOTE: A warning message may appear to verify you wish to change the type of license. Click **Yes** to continue (see image below).



3. The **Softkey Settings** dialog appears. Click the **Change License** button (see image below).

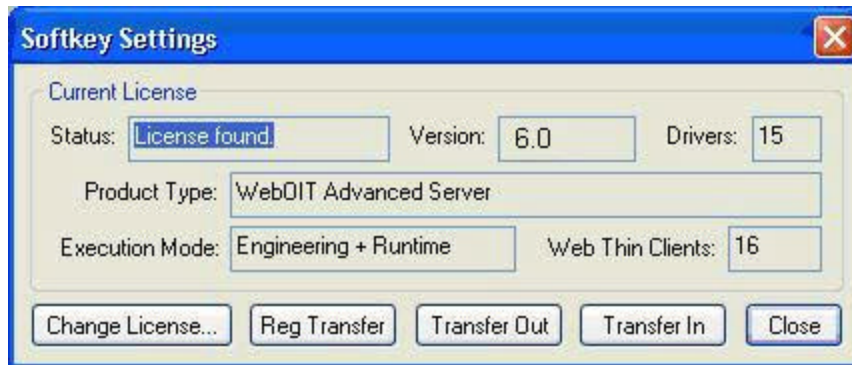


4. The **Change License – Softkey** dialog box appears. Copy and paste the contents of the **Site Code** field ALONG WITH the **Serial Number** located on the CD-ROM case into an e-mail. Both the serial number and Site code must be e-mailed to studio.license@advantech.com. Your new Site Key will be e-mailed back to you (see image below).



NOTE: Your **Site Key** will not be issued without the **Site Code AND the Serial number** from the CD-ROM case.

- Once you have received your **Site Key** e-mail, enter the **Site Key** into the **Site Key** field and click the **Authorize** button. An authorized license appears in the Softkey Settings dialog box (see image below).



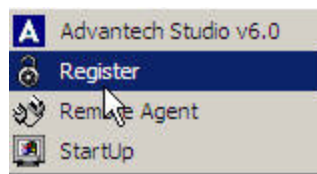
- When finished, click the **Close** button to close the **Softkey Settings** dialog box.

NOTE: Re-installing your operating system, re-installing AStudio, or making an image of your hard drive to another hard drive (ghosting) will cause a loss of license. There is a method to move your license to another machine prior to doing this. The instructions for moving the Softkey can be found on our web site at: http://www.e-automation.cc/AdvantechStudio/AStudio_Demo.htm

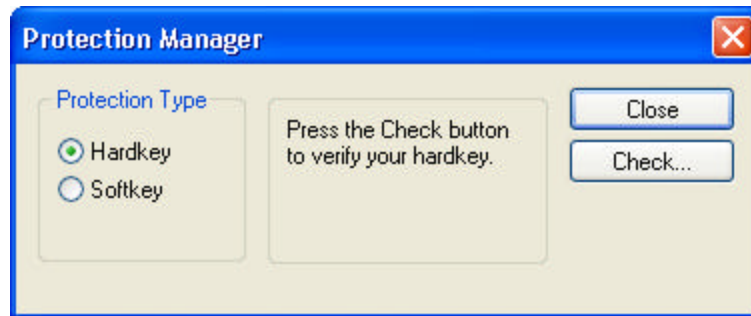
To license your software with a Hardkey:

The preferred licensing method is using a Softkey. Hardkey licensing is available by special request only.

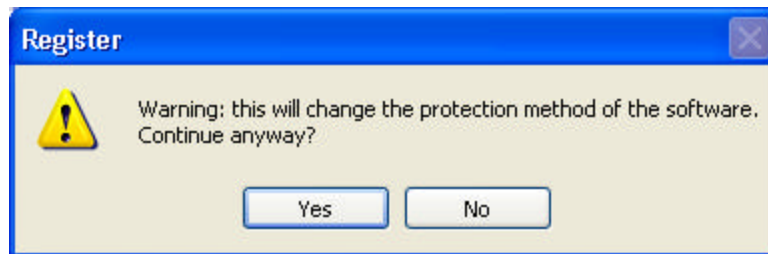
- Plug the license key into the parallel or USB port of the machine where you wish to run AStudio. The parallel port key is a pass through key, which will allow a printer to be connected without disruption.
- Before starting AStudio, click **Start/Programs/AdvantechStudio/Register** (see image below).



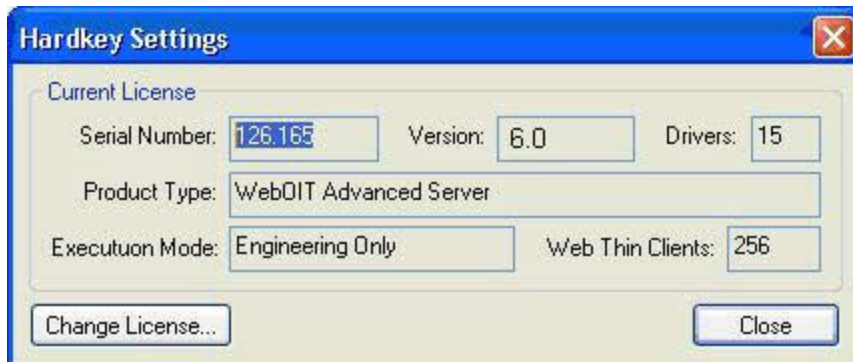
3. Click the **Hardkey** radio button then click the **Check...** button on the **Protection Manger** dialog box (see image below).



NOTE: A warning message may appear to verify you wish to change the type of license. Click **Yes** to continue (see image below).



4. If the key is present and working, a dialog will appear with the type of license.



These instructions can also be found on your AStudio CD-ROM in the User Guide.